

Reservation Fee \$20 per head

Make check payable to:

Tri-County Steer Carcass Futurity

Mail to: Eldon Cole
(for JRS collection) P.O. Box 388
Mt. Vernon, MO 65712
417-466-3102

Or: Daniel Mallory
(for PVC collection) P.O. Box 540
New London, MO 63459
573-985-3911

Or: Zac Erwin
503 E. Northtown Rd
Kirksville, MO 63501
660-665-9866

Or: Shawn Deering
(for NW MO Collection) 1109 S Birch St.
Albany, MO 64402
660-726-5610

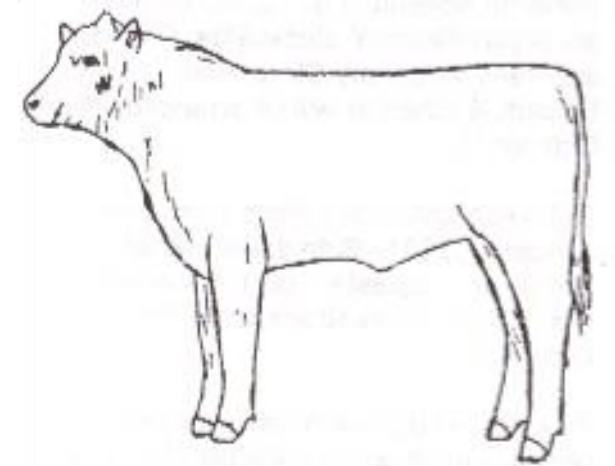
Or: Gene Schmitz
1220 Commercial St.
Warsaw, MO 65355
660-438-5102

Deadline is: May 10, 2016

Following receipt of your entry a detailed form with farm ID, birth date, breed makeup, health products used and dates will be sent to you. This form will accompany the steers when delivered in June.

For more information contact your regional livestock specialist or check out the TCSCF website at: <http://www.tcscf.com/>

MISSOURI STEER FEEDOUT 2016



Sponsored by:
Missouri Cattlemen's Association
University of Missouri Extension
Iowa State Extension & Tri-County
Steer Carcass Futurity Cooperative

UNIVERSITY OF MISSOURI
 **Extension**



PROCEDURES:

1. The feedout will be held in cooperation with the Tri-County Steer Carcass Futurity (TCSCF) Lewis, Iowa. Seven different feedlots participate and Iowa State extension personnel supervise the program along with the TCSCF board.
2. **Entry deadline is May 10, 2016.** Calves will be delivered to the collection points on June 7. Collection points are Joplin Regional Stockyards, Carthage, Paris Veterinary Clinic, Paris and a location in Northwest Missouri. A specific unloading schedule will be arranged after May 10.
3. Eligible steer calves are those born after July 1, 2015. Birth dates and sire identity are requested, but not mandatory. A minimum of 5 head are required with no maximum.
4. A non-refundable reservation fee of \$20 per head must accompany the entry form. That check will be used for incidental expenses during the feedout and credited to your account.
5. You are asked to sign the enclosed form which states that you will sell the calves to TCSCF for \$5 per head. All ownership rights are thus conveyed to, and calves become the property of TCSCF. This allows the calves to be used as collateral to borrow against to finance feeding expenses. This eliminates the need for a feed deposit or bi-weekly feed bill. Death will be a loss to TCSCF and the former owner.
6. TCSCF has made arrangements with the lender to advance \$400 per head on a minimum of 10 head of steers. The

\$400/head advance is available once the cattle have been processed in Iowa. On a case by case basis we will consider additional amounts after the on-test weights are collected, the health of the consignment is acceptable and the market value per head placed on the consignment by the USDA Market Reporter. The total advance will not exceed 50% of the initial market value of the cattle.

7. Approximately 10 days after the first harvest date for a pen, owners may request a \$400 per head advance if they have not taken an advance earlier. Final settlement will be made after the entire shipment from Missouri has been harvested and all feeding costs have been paid.

8. Advances are made by setting up a note at the bank. Consignors are responsible for the interest incurred from that advance. Cattle sold on the first harvest are eligible for an advance with no interest if they have not received an advance already. Advance notes made earlier will be paid down or off with proceeds from the first harvest.

9. Animals bear all expenses on an individual basis. Trucking will be prorated on a weight basis; feed costs will be calculated based on weight, rate of gain and composition of gain.

10. Optimum entry weights are 500 to 750 pounds. Calves weighing under 500 pounds will be at a disadvantage. The TCSCF board reserves the right to disqualify any animal if a problem arises. Disqualified steers will be sold and expenses charged against that steer.

11. Calves must be weaned at least 30 days

prior to delivery with **45 days preferred**. They shall be bunk broke, dehorned, castrated and healed. Castration, pre-weaning is preferred.

12. Do not implant calves with growth promotants at weaning. They will be put on an implant program at the feedlot.

13. Steers must receive these immunizations at least 28 days before delivery: IBR, PI₃, BVD, Pasteurella, (pre-weaning only) both haemolytica & multocida, BRSV and 7 or 8-way Clostridial. **Two rounds of Modified Live Vaccines are required.** For added protection some of these immunizations should be boosted before delivery. If Haemophilus somnus is given do not use it with the first round of vaccinations. Delay until calves are weaned.

14. Verified black hided cattle will be eligible for the CAB premiums.

The **Missouri Steer Feedout** is an educational program for cattle producers. The purpose is to give cattlemen the opportunity to:

- (1) Evaluate the genetics and management of their calves as they influence feedlot performance and carcass characteristics.
- (2) See if your cattle hit the 70-70-0 target. 70% low Choice or better; 70% Yield Grade 1 & 2; 0% Outs.
- (3) Gain experience feeding cattle and retaining ownership without the investment and risk of feeding an entire pen of cattle.
- (4) Improve the quality and reputation of Missouri cattle while exploring market alternatives.